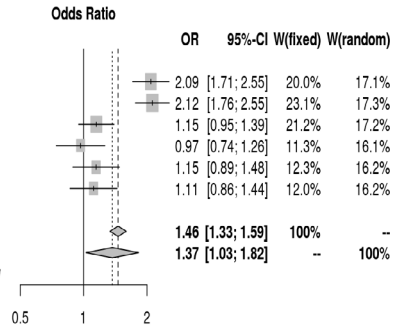


A

(i)

Study	Experimental		Control	
	Events	Total	Events	Total
"Najatizadeh,2008"	553	898	312	718
"Kohli,2016"	676	1090	348	800
"Ramu, 2011"	820	924	568	888
"Padma, 2015"	247	430	268	460
"Charita,2012"	283	482	268	484
"Vamsi,2012"	308	558	210	400
Fixed effect model	4382		3750	
Random effects model				

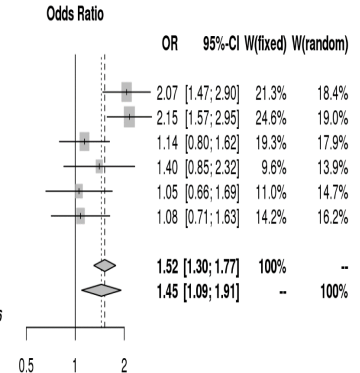
Heterogeneity: I-squared=90.1%, tau-squared=0.1156, p<0.0001



(ii)

Study	Experimental		Control	
	Events	Total	Events	Total
"Najatizadeh,2008"	375	449	255	359
"Kohli,2016"	458	545	284	400
"Ramu, 2011"	392	462	369	444
"Padma, 2015"	184	215	186	230
"Charita,2012"	200	241	199	242
"Vamsi,2012"	209	279	147	200
Fixed effect model	2191		1875	
Random effects model				

Heterogeneity: I-squared=67.7%, tau-squared=0.0814, p=0.0066

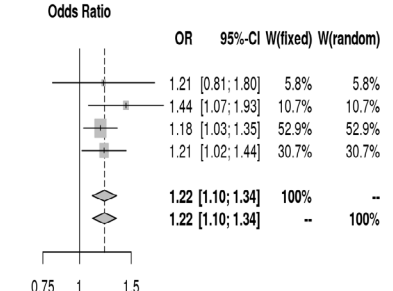


B

(i)

Study	Experimental		Control	
	Events	Total	Events	Total
"Zhu,2003"	100	192	90	190
"Hlubocka,2009"	258	426	161	312
"Castellano,2003"	1990	3556	605	1166
"Staessen,2001"	398	678	1211	2244
Fixed effect model	4852		3912	
Random effects model				

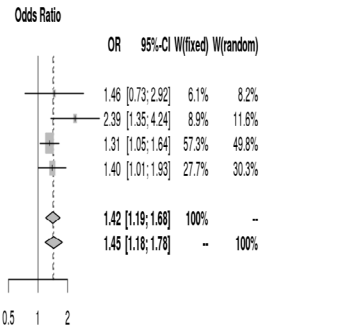
Heterogeneity: I-squared=0%, tau-squared=0, p=0.6861



(ii)

Study	Experimental		Control	
	Events	Total	Events	Total
"Zhu,2003"	78	96	71	95
"Hlubocka,2009"	190	213	121	156
"Castellano,2003"	1443	1778	447	583
"Staessen,2001"	285	339	887	1122
Fixed effect model	2426		1956	
Random effects model				

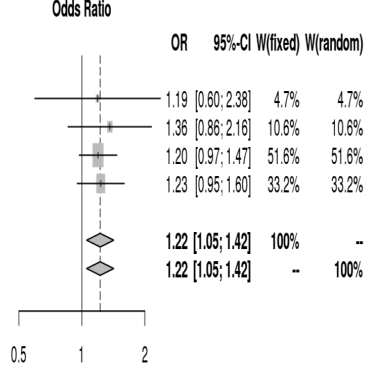
Heterogeneity: I-squared=18.2%, tau-squared=0.0087, p=0.2899



(iii)

Study	Experimental		Control	
	Events	Total	Events	Total
"Zhu,2003"	22	96	19	95
"Hlubocka,2009"	68	213	40	156
"Castellano,2003"	547	1778	158	583
"Staessen,2001"	113	339	324	1122
Fixed effect model	2426		1956	
Random effects model				

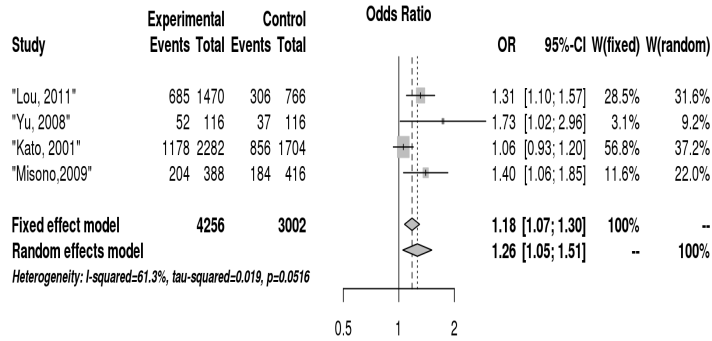
Heterogeneity: I-squared=0%, tau-squared=0, p=0.9674



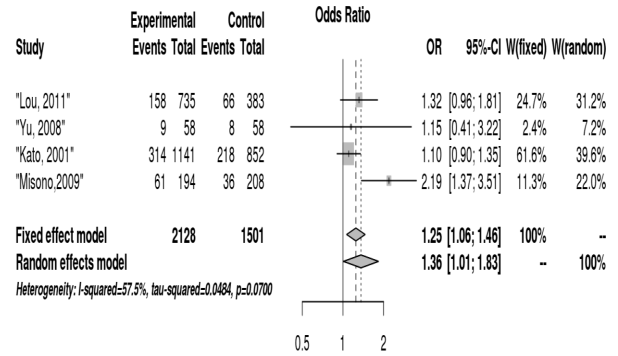
Supplementary Fig. 2. Contd...

C

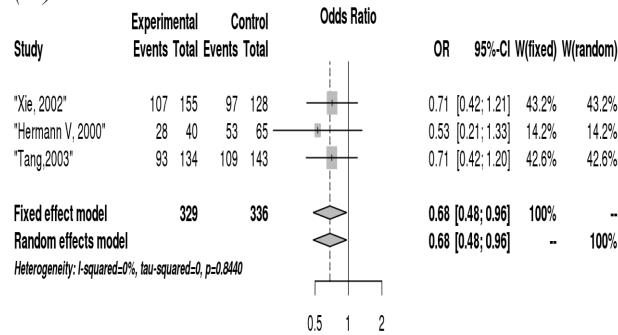
(i)



(ii)



(iii)



Supplementary Fig 2. Forrest plots for the populations showing statistically significant association between (A) *AGT*-rs699, India; north and south India (i) allele model and (ii) dominant model. (B) *CYP11B2*-rs1799998 (i) Allele model, (ii) recessive model, (iii) dominant model in Europe by excluding Bengra *et al*²⁶. (C) *ADRB2*-rs1042713, East Asia (i) allele model, (ii) recessive model and (iii) African America (dominant model) and HTin Indian population ($P < 0.05$).